

# **The European Experience: Prescription Drug Misuse in France, Germany, Italy and Spain**

**24 October 2017**

**Presented at Lisbon Addictions 2017**

**Jody L. Green, PhD, CCRP**

**Denver Health and Hospital Authority**

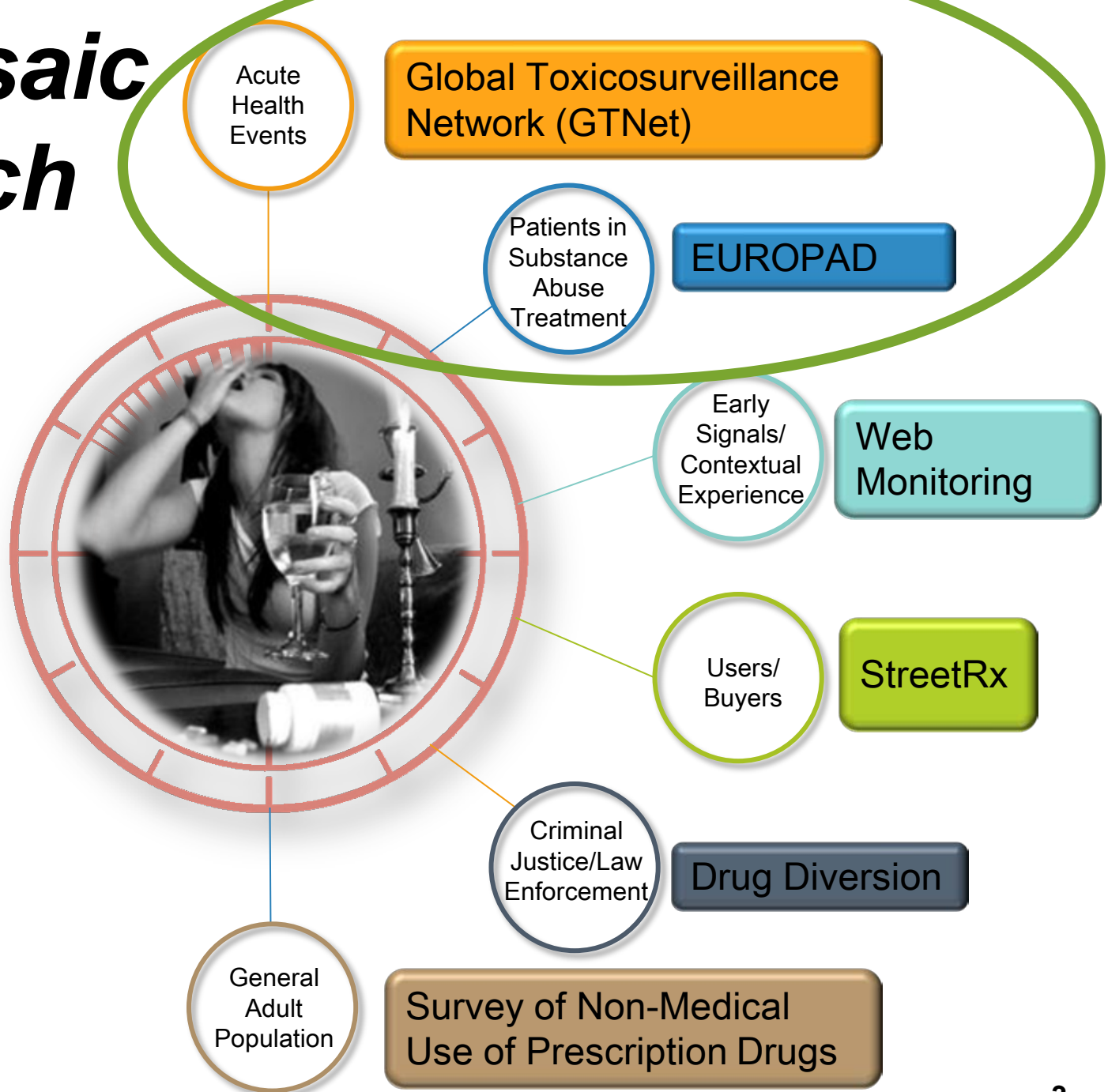
**Canadian Consumer Product & Pharmaceutical Safety Inc**

**RADARS<sup>®</sup> System**

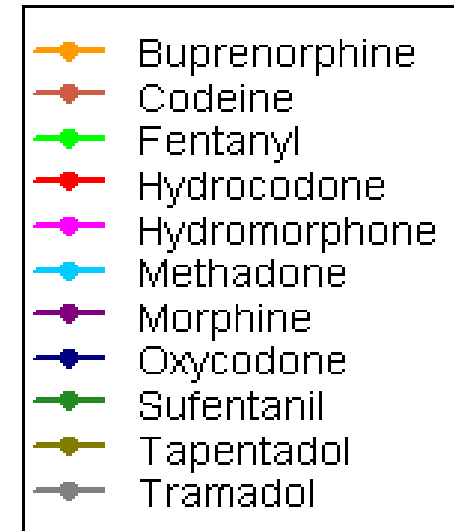
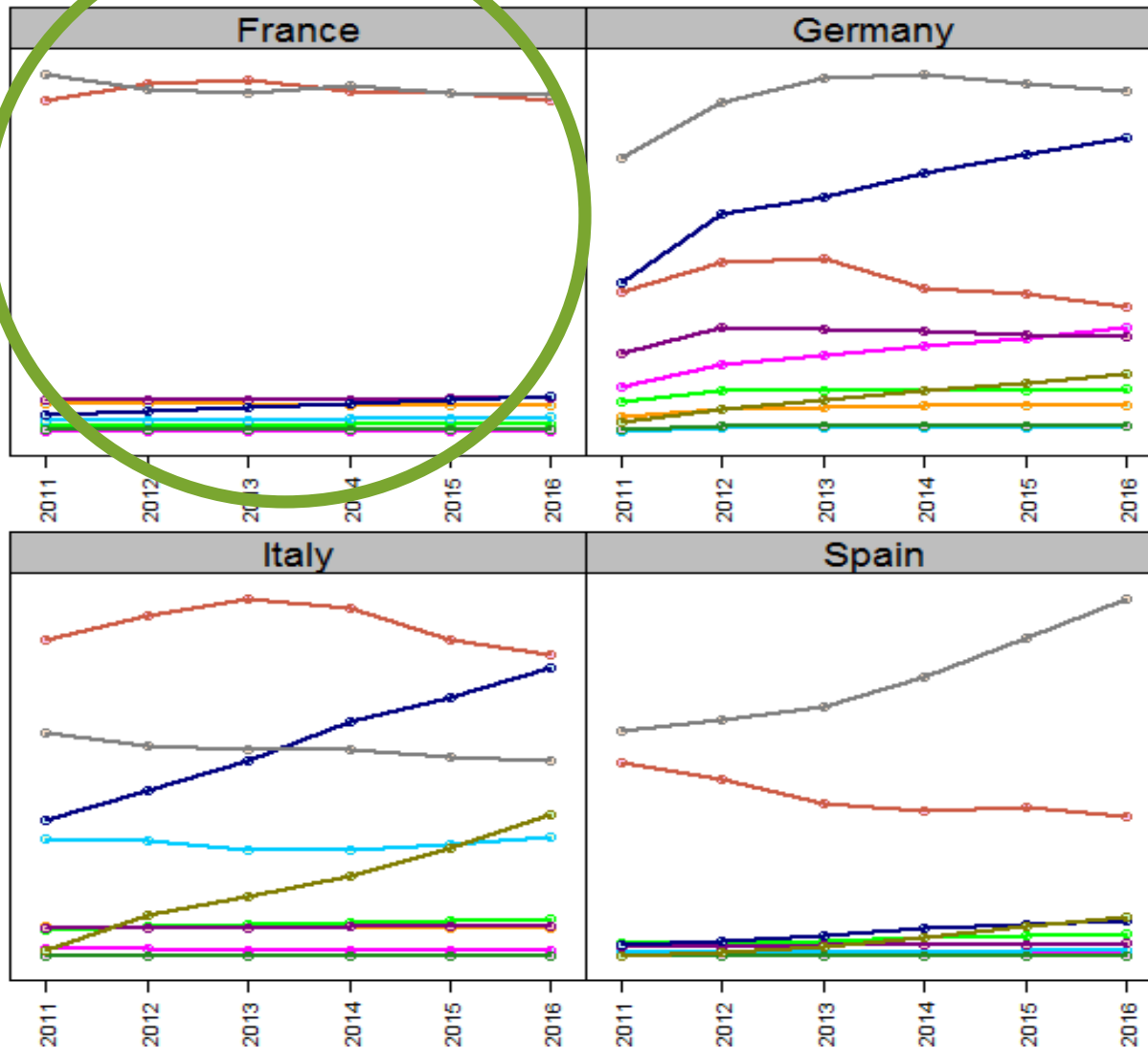
# Introduction

- A *mosaic* approach – use of multiple different data sources, surveying different populations, collecting important outcome measures
- Important to look within a country, comparing trends across countries but quantitative rates not comparable due to varying methodology, cultures, market availability
- Important to be product and route specific to identify risks and evaluate interventions such as abuse deterrent formulations

# The Mosaic Approach

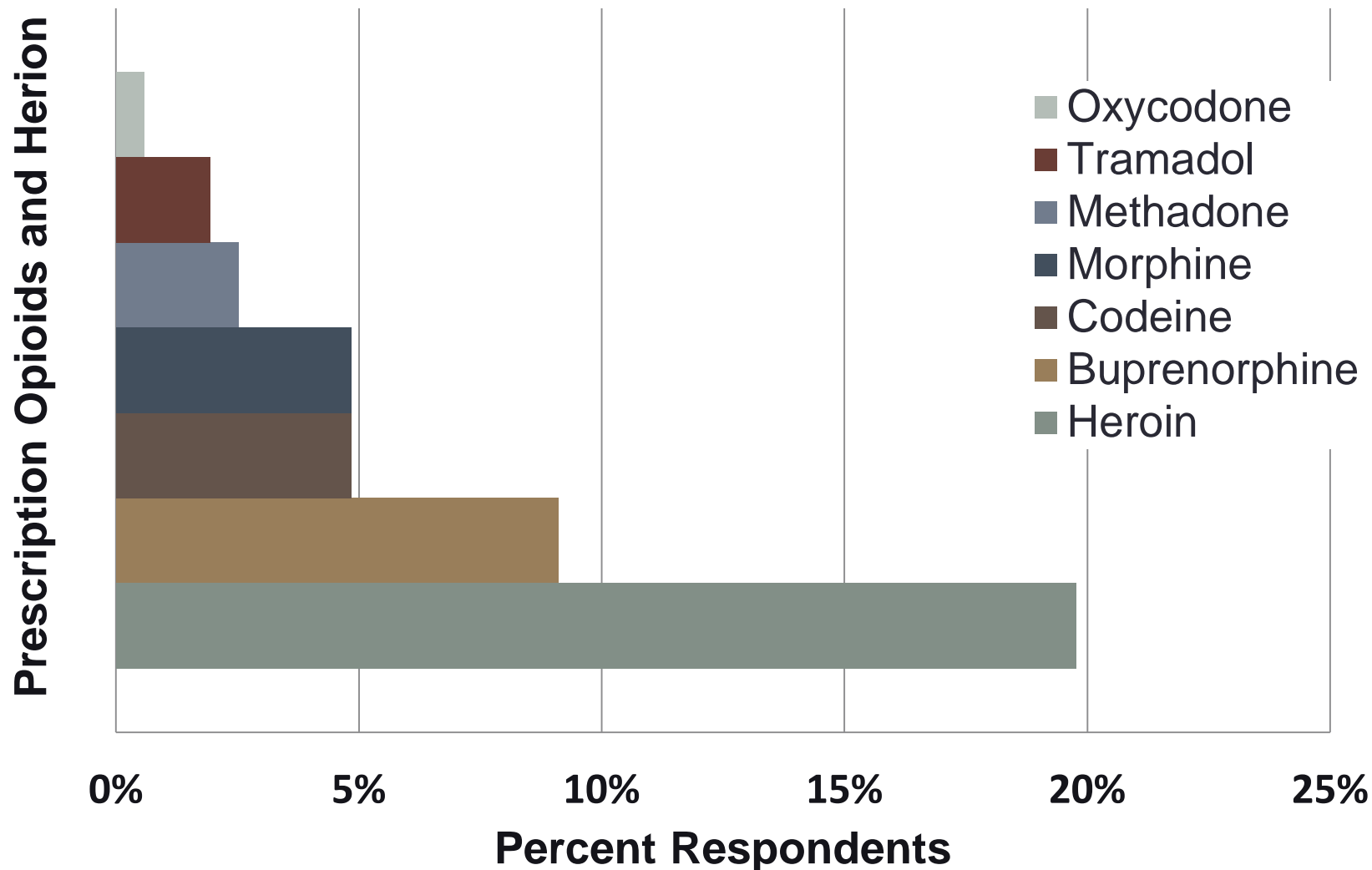


# Europe – Dosage Units per Population



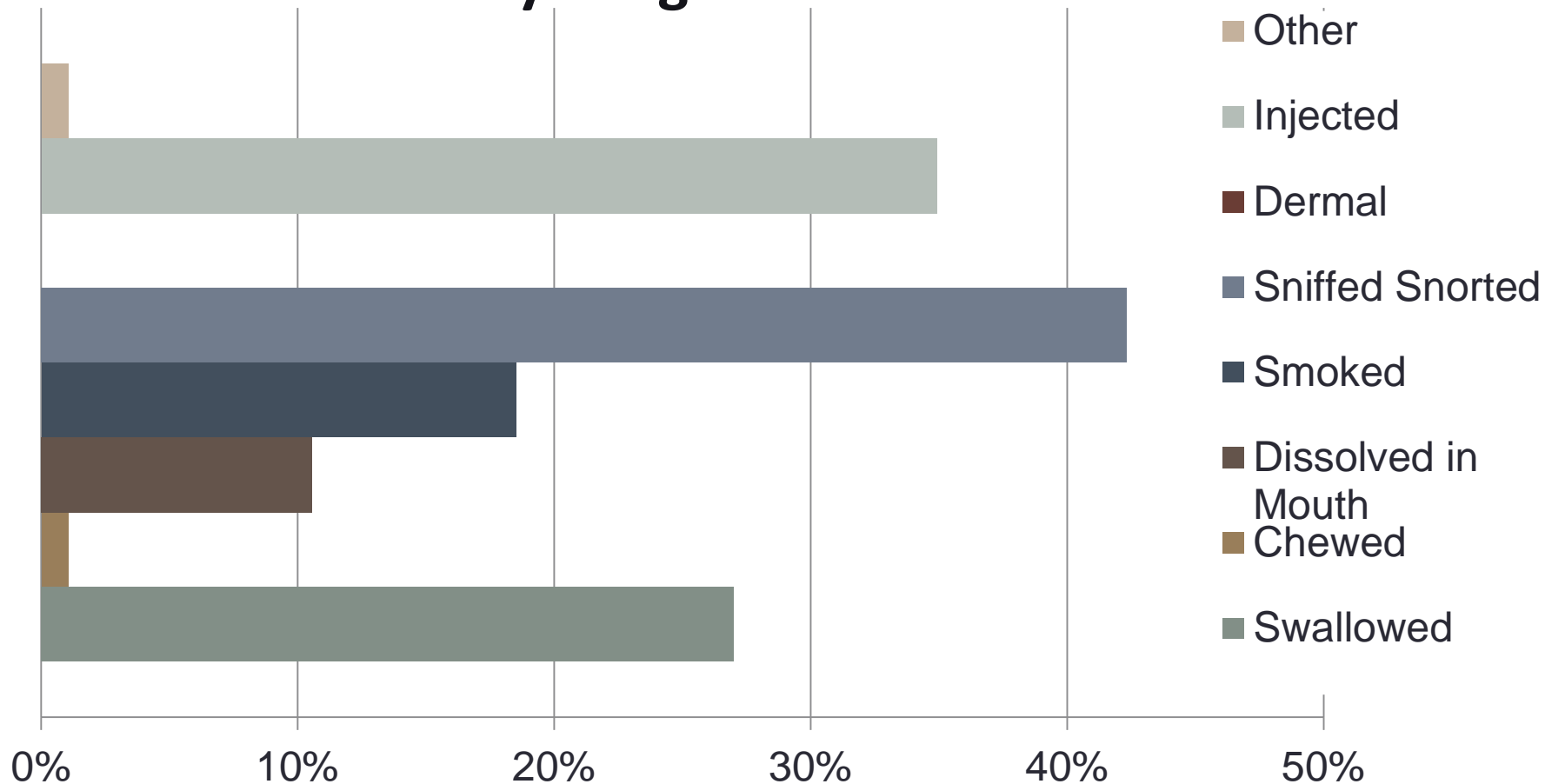
# France- EUROPAD (through 4Q2016)

## Primary Drug Used to Get High in Past Month

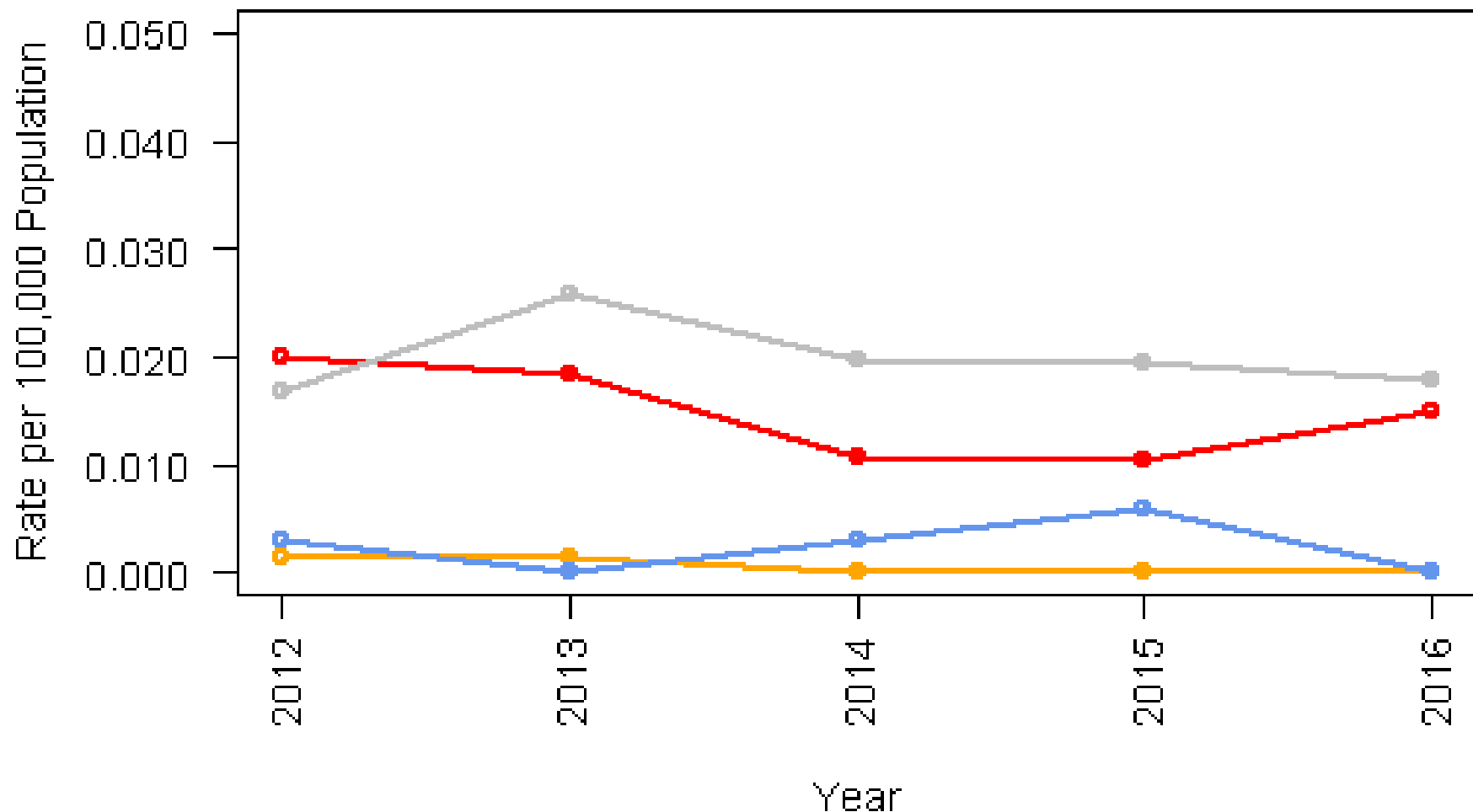


# France- EUROPAD

## Route of Primary Drug



# France GTNet—Adult Human Intentional Abuse Exposures Reported to Poison Center



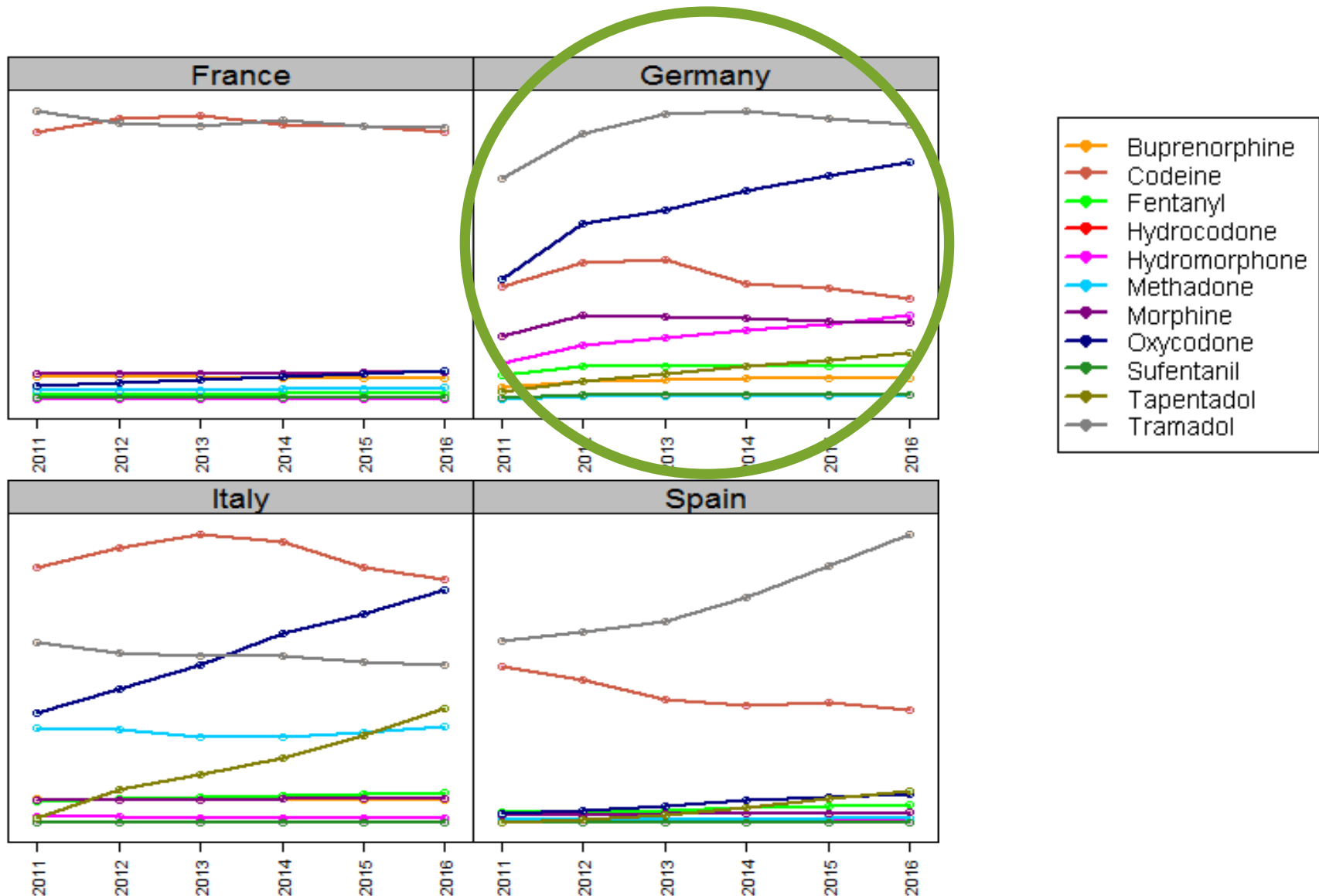
— Opioids      — Stimulants      — Benzodiazepines      — GABA Analogues

# France Summary

- Codeine and tramadol by far the most utilized, most other opioids increasing
- Patients entering substance abuse treatment most often report heroin and buprenorphine as their primary drug of abuse
  - Sniff/smoke primary drug 42%
  - Inject primary drug 35%
- Opioids and benzodiazepines are most common intentional abuse exposures reported to poison centres

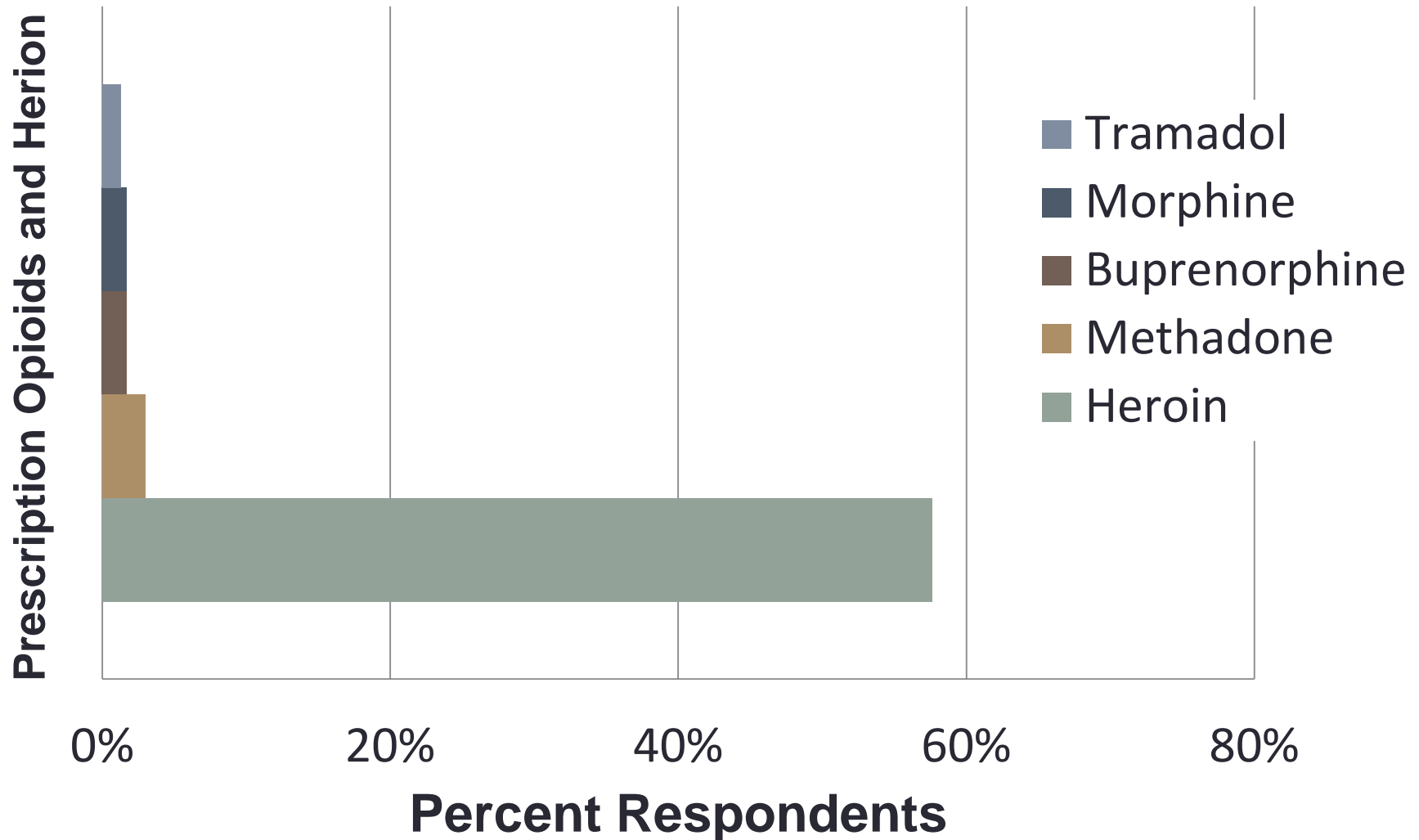


# Europe – Dosage Units per Population



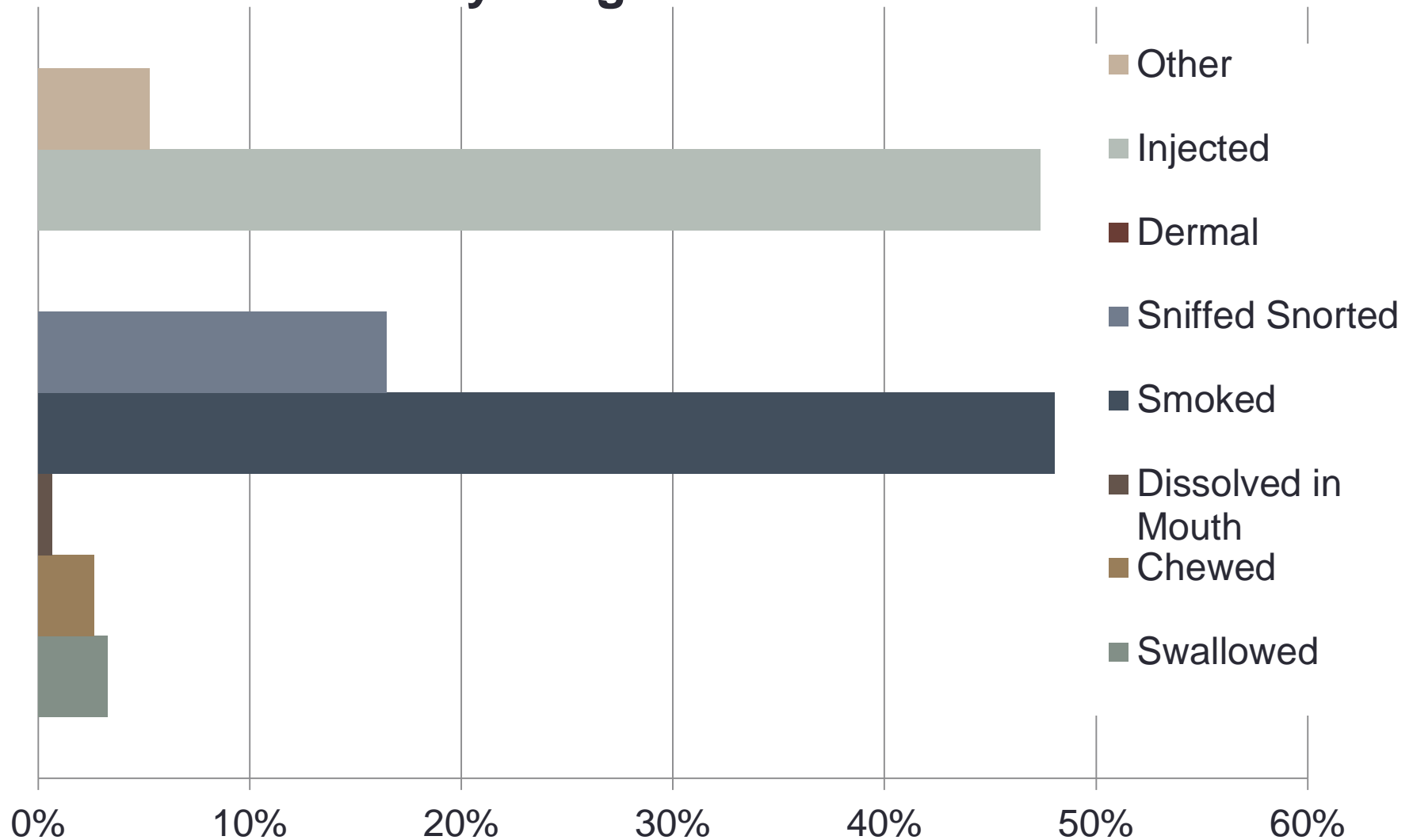
# Germany - EUROPAD

## Primary Drug Used to Get High in Past Month

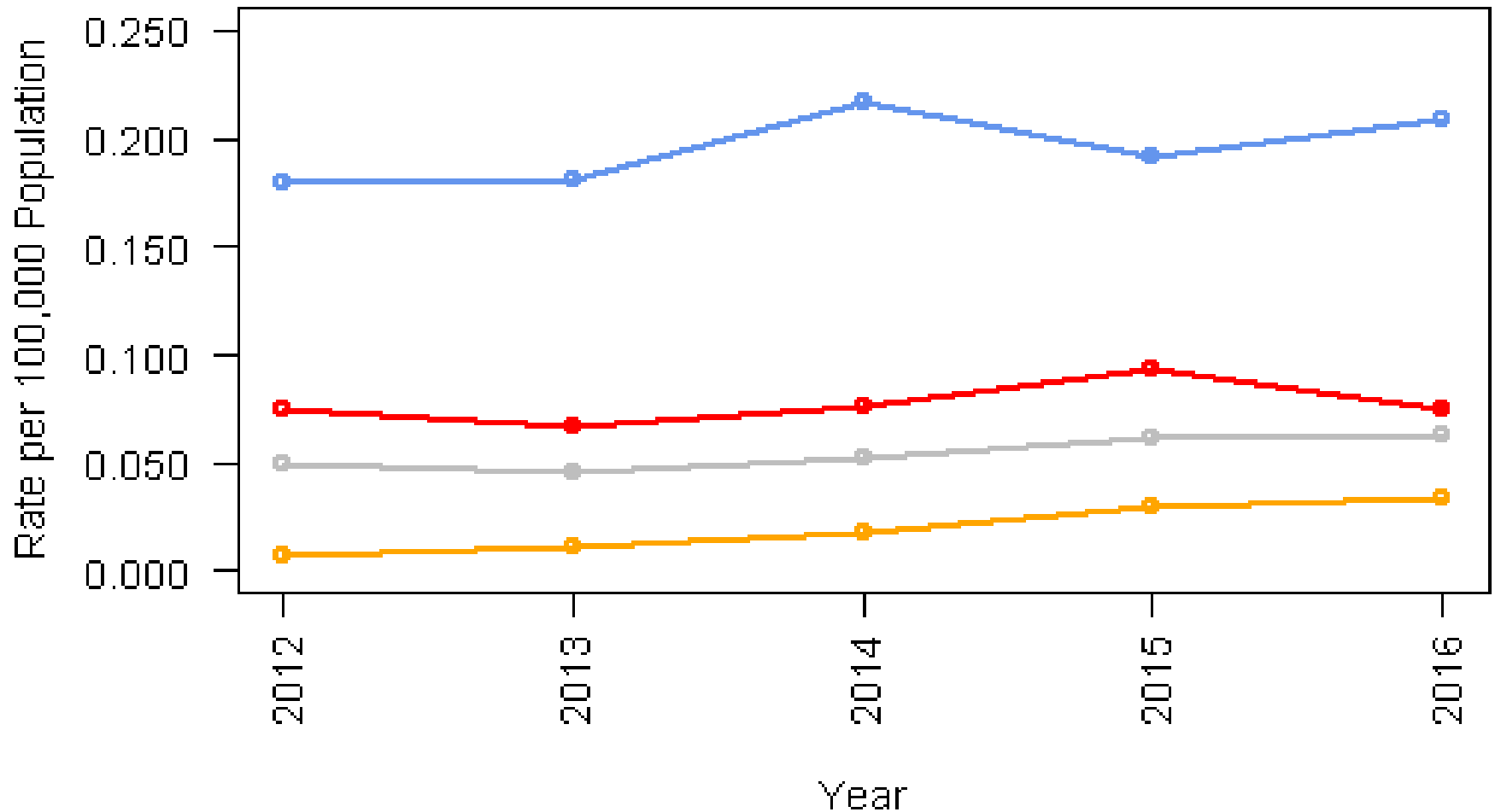


# Germany - EUROPAD

## Route of Primary Drug



# Germany GTNet—Adult Human Intentional Abuse Exposures Reported to Poison Center



— Opioids

— Stimulants

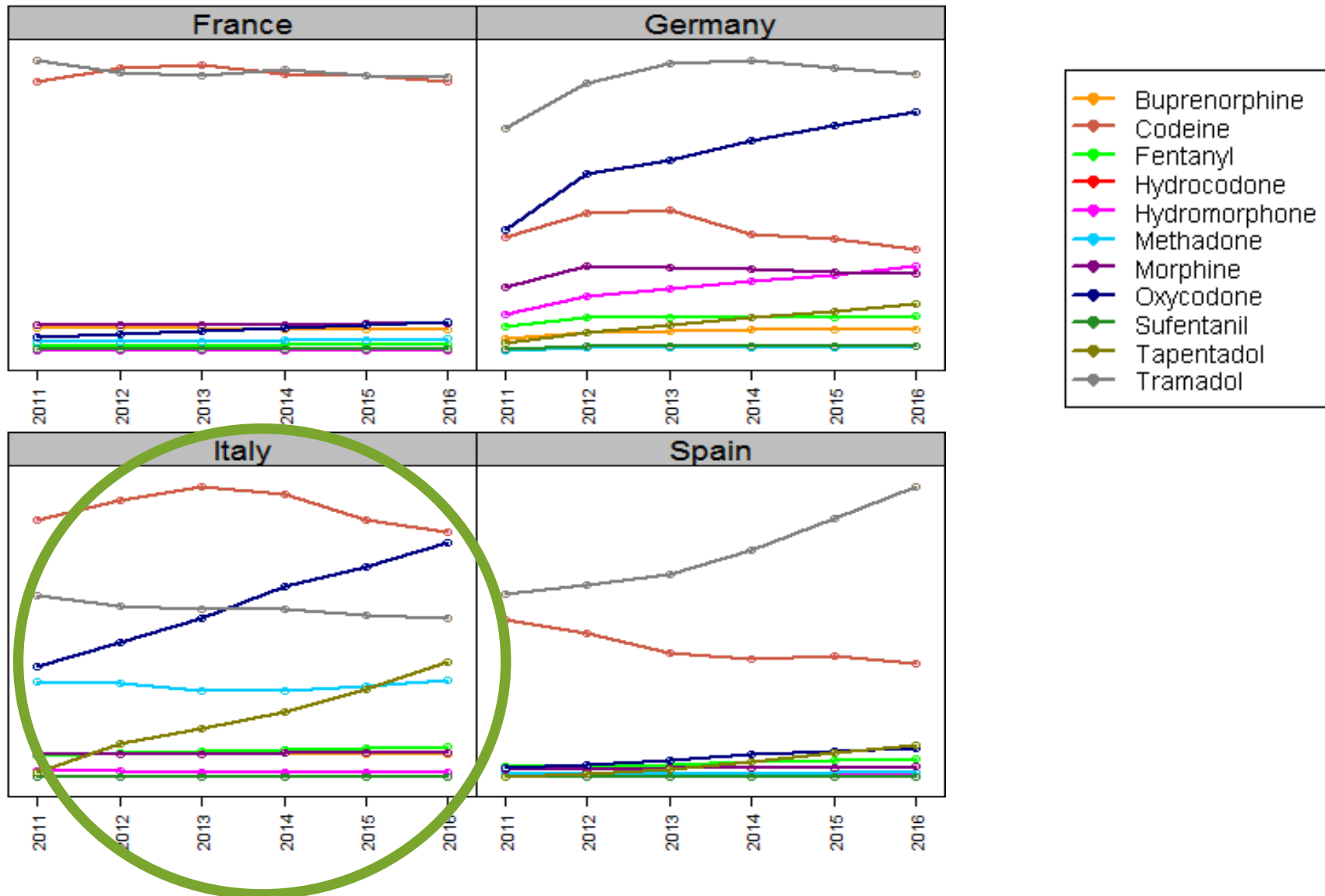
— Benzodiazepines

— GABA Analogues

# Germany Summary

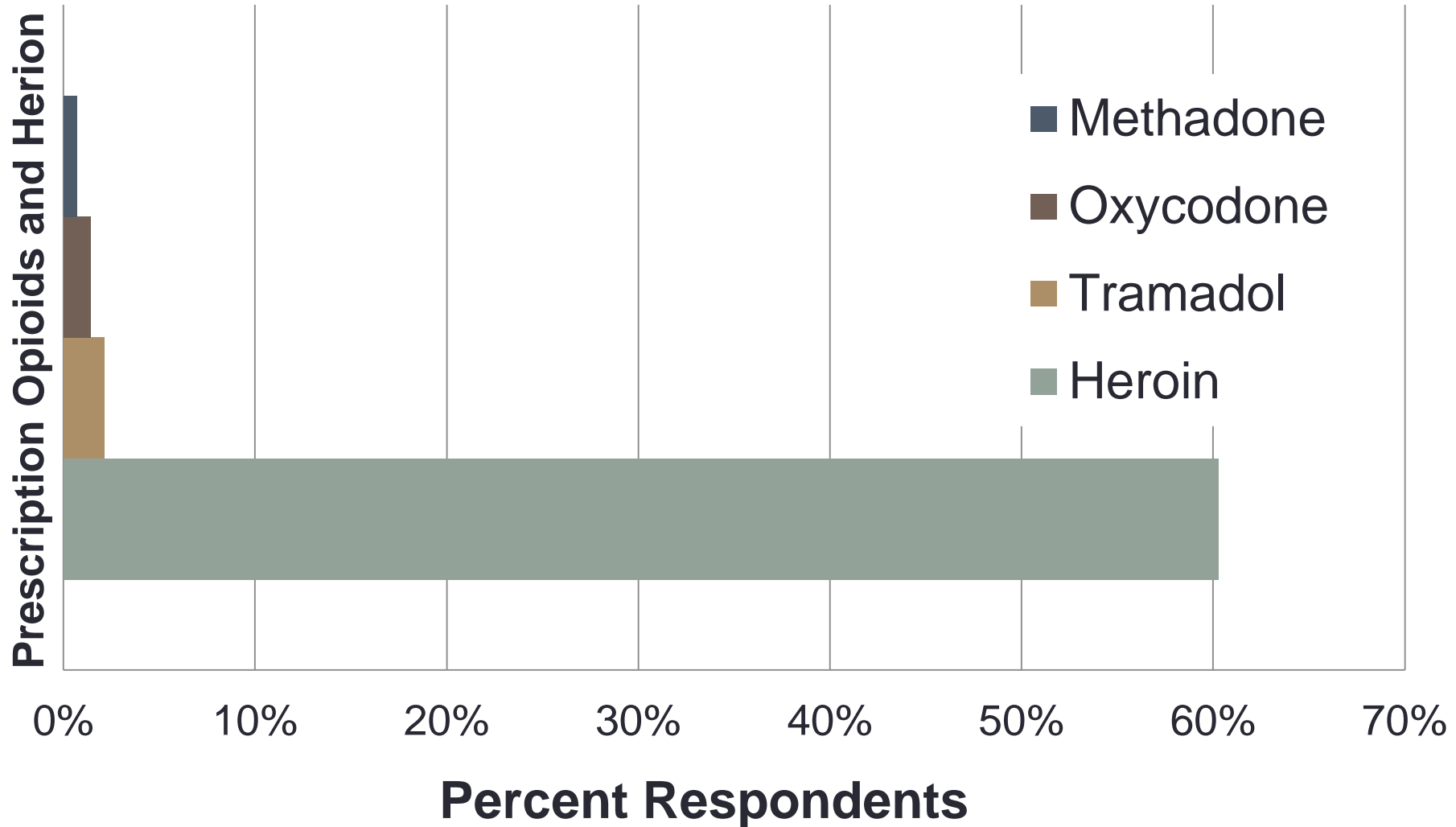
- Tramadol is most utilized product, oxycodone and hydromorphone utilization increasing
- Patients entering substance abuse treatment most often report heroin followed by methadone as their primary drug of abuse
  - Smoked primary drug 48%
  - Injected primary drug 47%
- Stimulants and benzodiazepines are the most common intentional abuse exposures reported to poison centres, with increasing rates of opioids and GABA analogs

# Europe – Dosage Units per Population



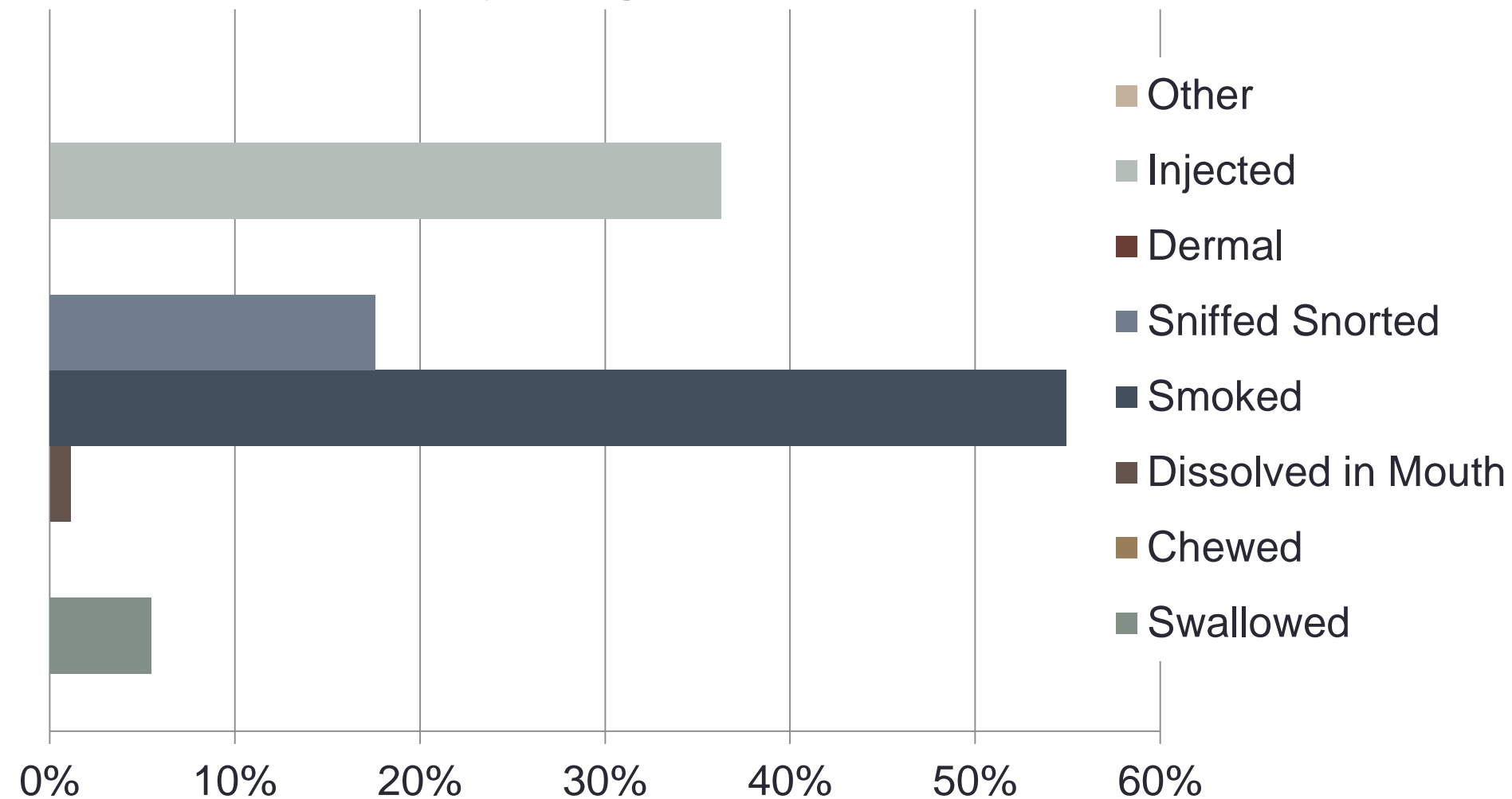
# Italy- EUROPAD

## Primary Drug Used to Get High in Past Month



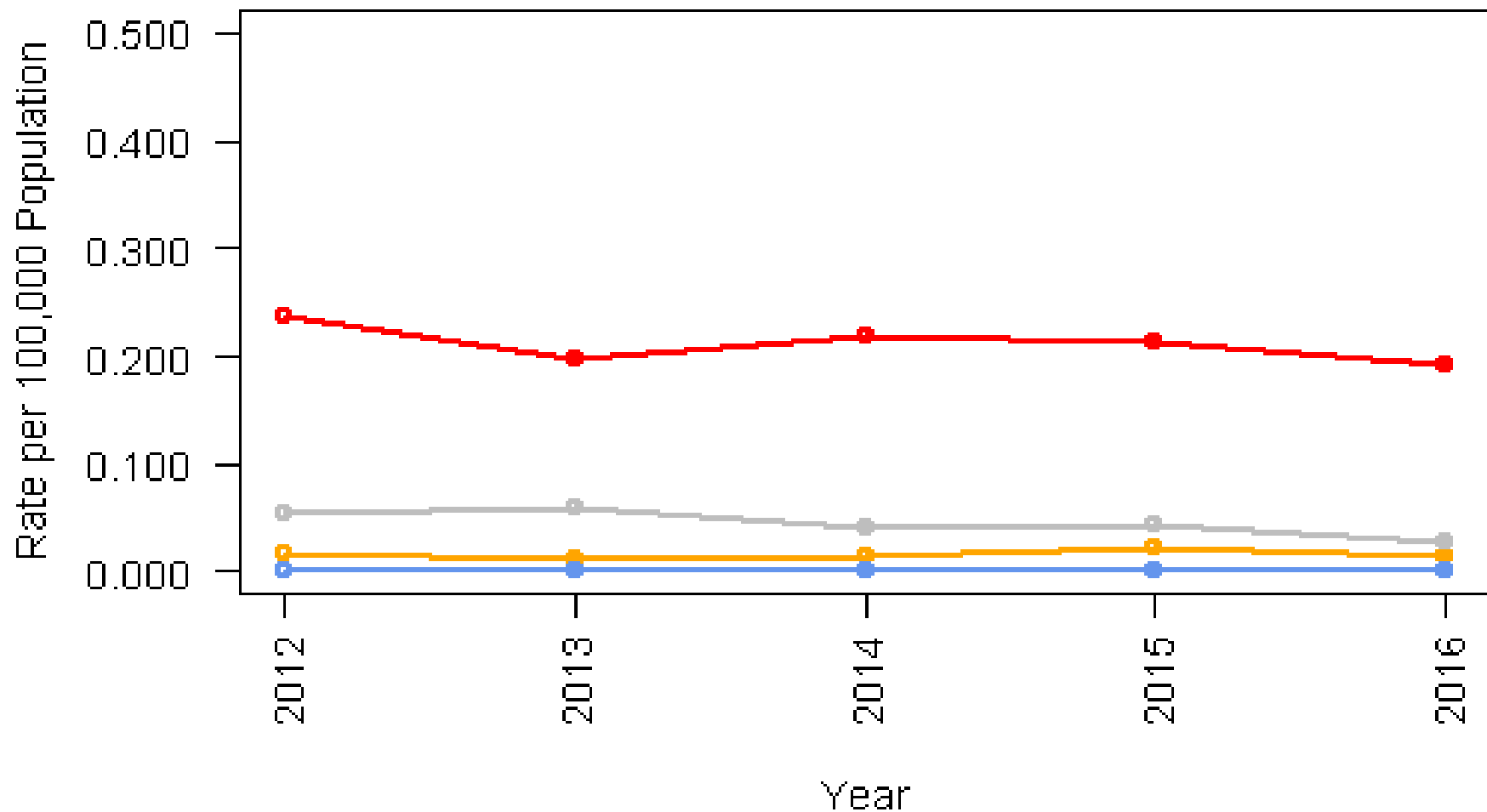
# Italy- EUROPAD

## Route of Primary Drug





# Italy GTNet—Adult Human Intentional Abuse Exposures Reported to Poison Center

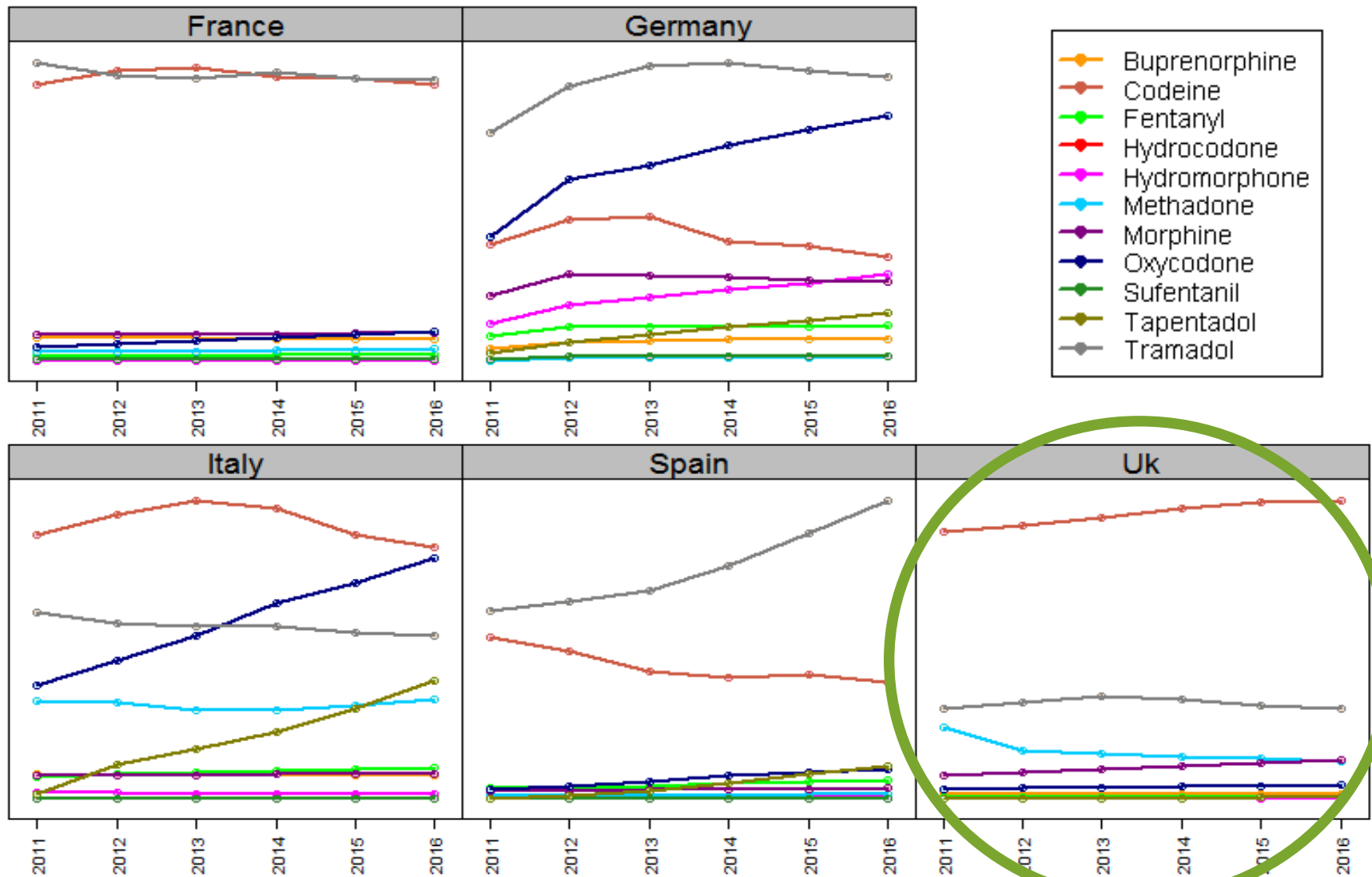


— Opioids      — Stimulants      — Benzodiazepines      — GABA Analogues

# Italy Summary

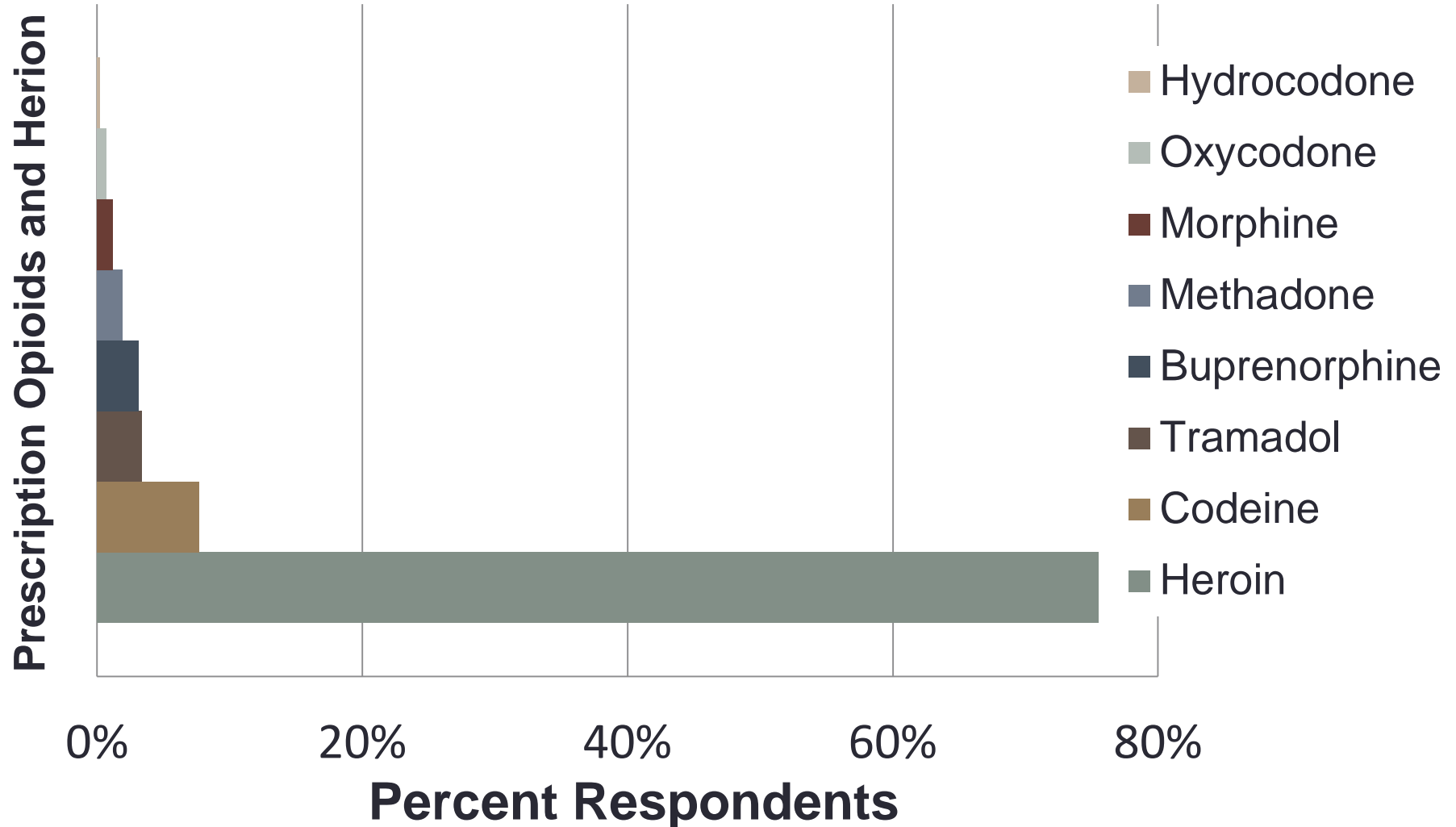
- Codeine most commonly utilized opioid, oxycodone utilization increasing and has surpassed tramadol; tapentadol also rising
- Patients entering substance abuse treatment most often report heroin followed by tramadol as their primary drug of abuse
  - Smoked primary drug 55%
  - Injected primary drug 36%
- Benzodiazepines most common intentional abuse exposure reported to poison centres

# Europe – Dosage Units per Population



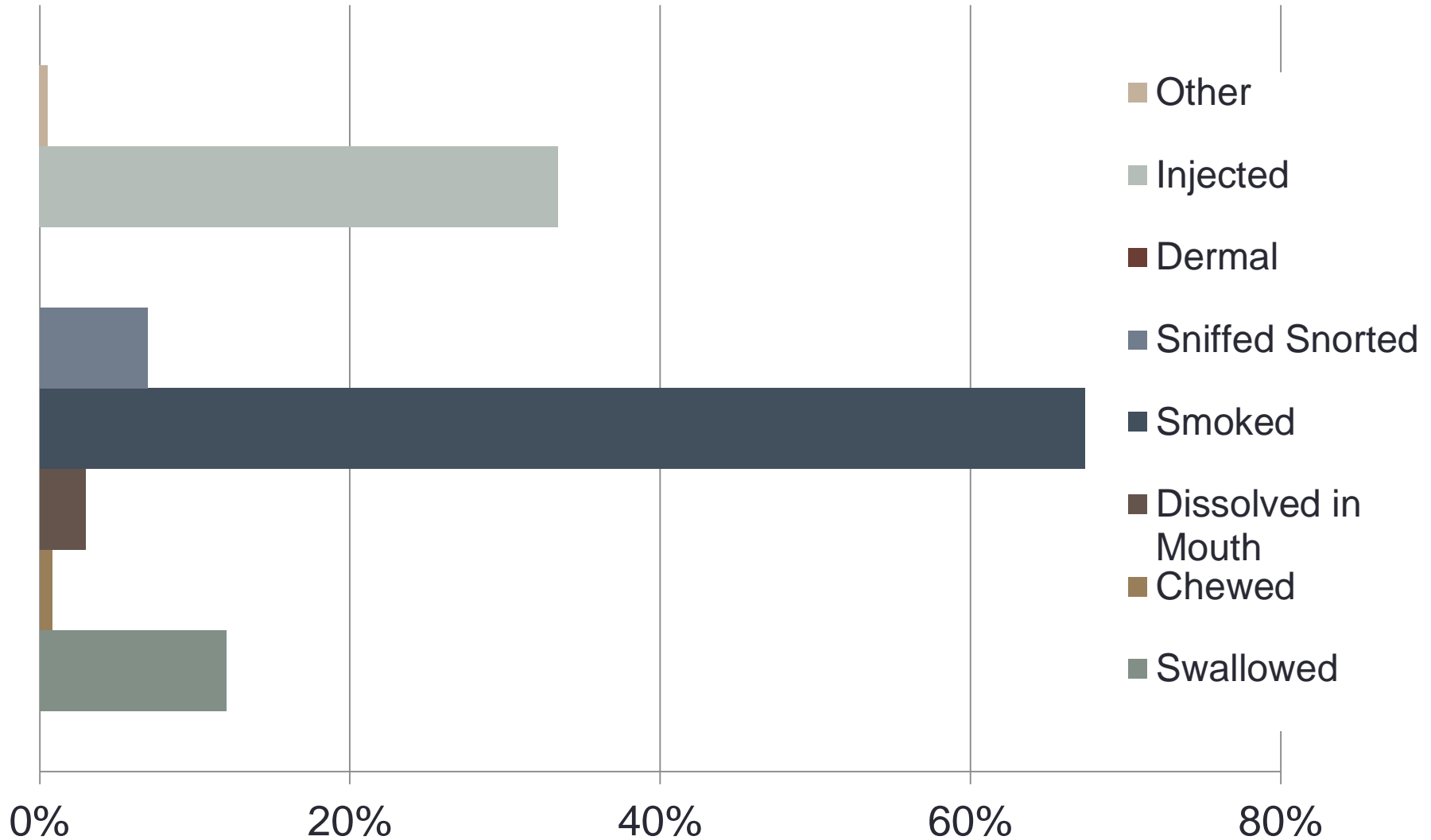
# United Kingdom - EUROPAD

## Primary Drug Used to Get High in Past Month

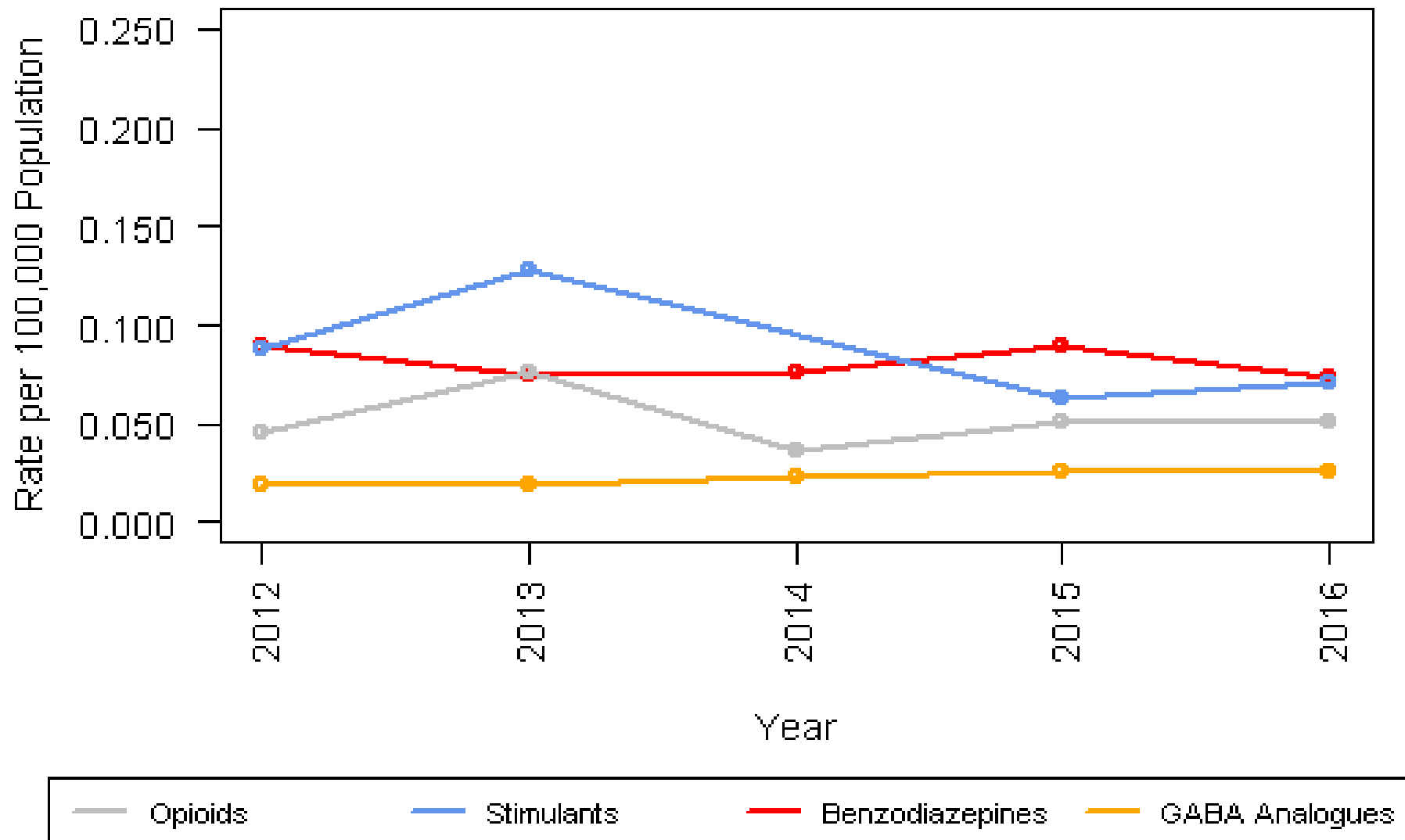


# United Kingdom - EUROPAD

## Route of Primary Drug



# UK GTNet—Adult Human Intentional Abuse Exposures Reported to Poison Center



# United Kingdom Summary

- Codeine most commonly utilized opioid, morphine utilization increasing
- Patients entering substance abuse treatment most often report heroin and codeine as their primary drug of abuse
  - Smoked primary drug 67%
  - Injected primary drug 33%
- Benzodiazepines and stimulants are most common intentional abuse exposures reported to poison centres

# Conclusion

- Country-specific data is important as the landscape is unique for each (e.g. utilization, culture, behaviors)
- While magnitude and patterns vary, heroin is most commonly reported primary drug for patients entering substance abuse treatment however prescription opioid abuse/misuse detected in all countries
- Detectable level of acute health events associated with prescription opioid exposures have been reported.
- Larger mosaic important to understand complex issues like prescription drug misuse



**ACKNOWLEDGEMENTS:  
GTNET PARTNERS  
EUROPAD PARTNERS**

---

**Questions?**

**[Jody.Green@rmpdc.org](mailto:Jody.Green@rmpdc.org)**