

RADARS[®]
SYSTEM **2021**

15TH ANNUAL SCIENTIFIC VIRTUAL MEETING

Meeting the Challenges of COVID-19 in Postmarketing Surveillance

Janetta Iwanicki, MD

Agenda

- Anticipated and observed trends in substance use during COVID-19
- Challenges of current research methodologies
- RADARS System approach to COVID-19 with current programs
- Highlights of research questions and novel approaches

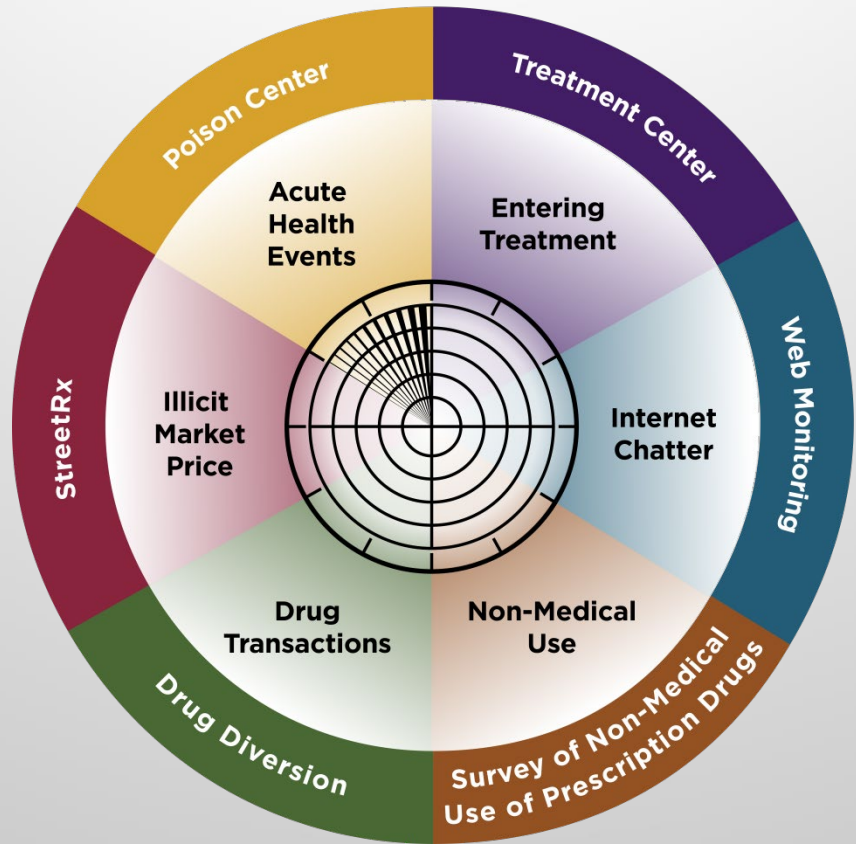
Anticipated Trends in SUD

- Anticipate increase in SUD in setting of social isolation, difficulty accessing support networks, etc.
- Possible drug-switching within and between classes
- Increase in access to telehealth may improve OUD treatment access, but decrease in in-person visits, staff
 - May see decline in treatment and increase in relapse
 - May see “bolus” as restrictions ease

Challenges of Current Methodologies

- Paper vs digital formats
- In person vs remote data collection
- Need for nimble approaches
- Need mixture of prospective data collection changes and retrospective analyses to anticipate major changes, provide policy/regulatory guidance

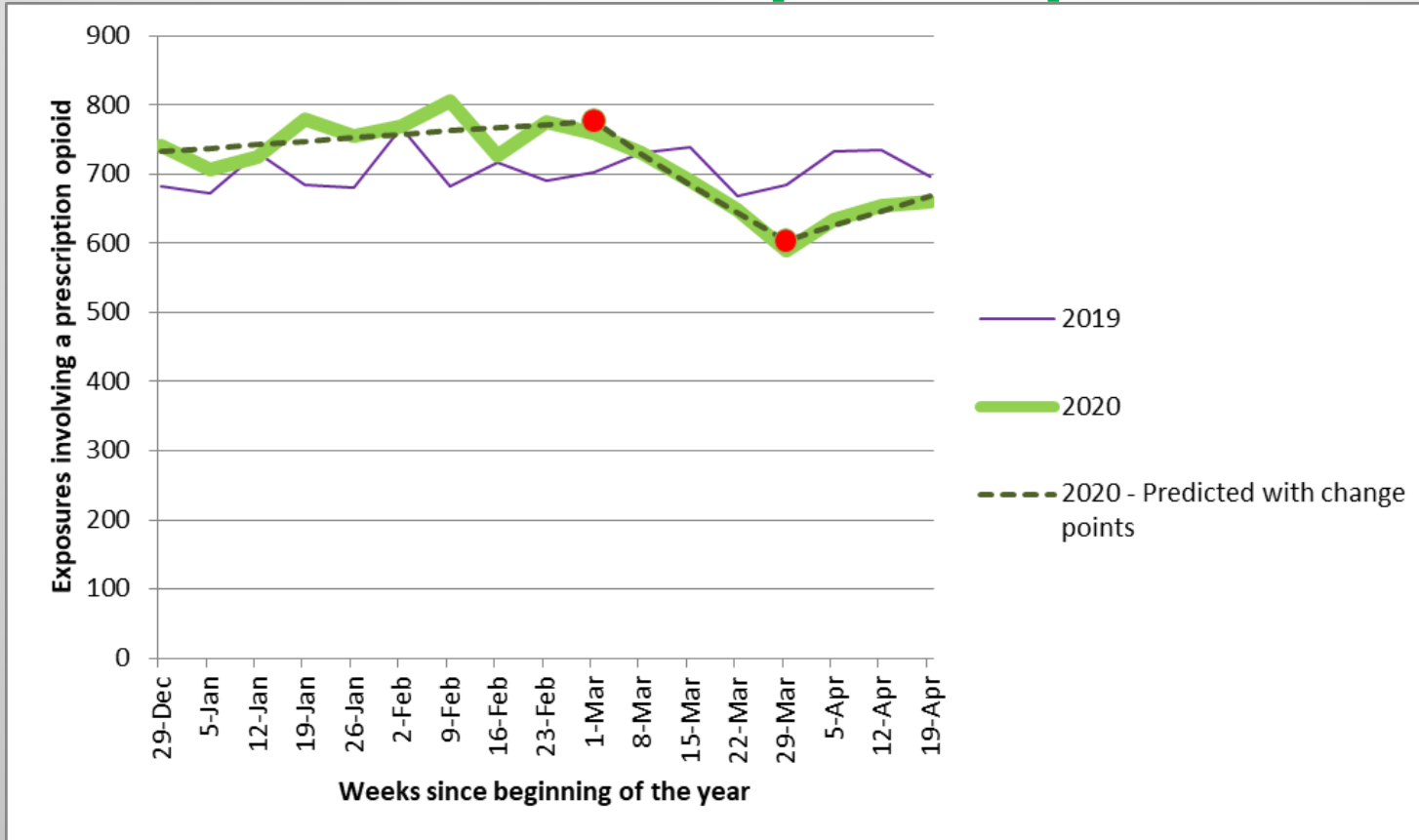
RADARS[®] System Mosaic Surveillance



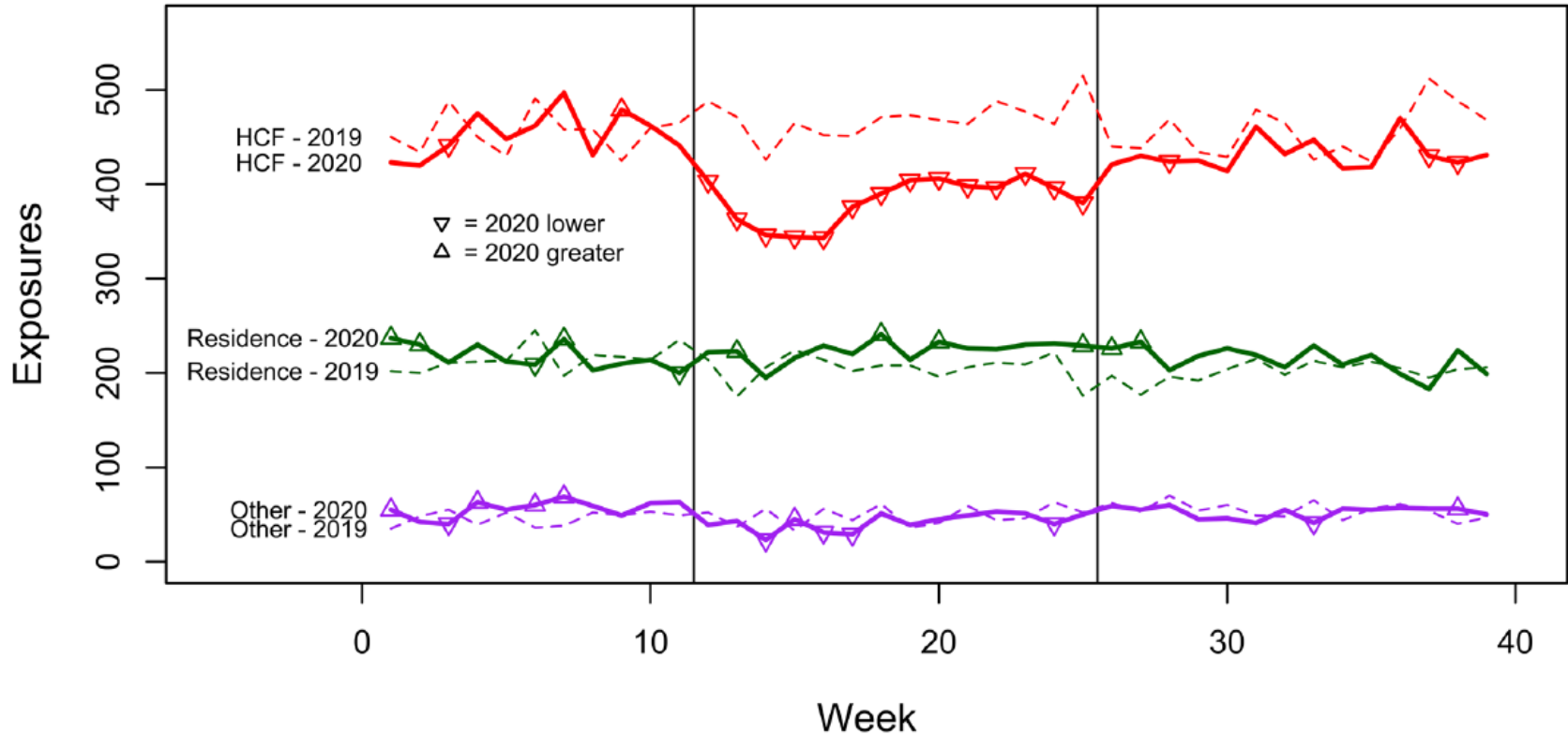


Impact of COVID-19 on Poison Center Data

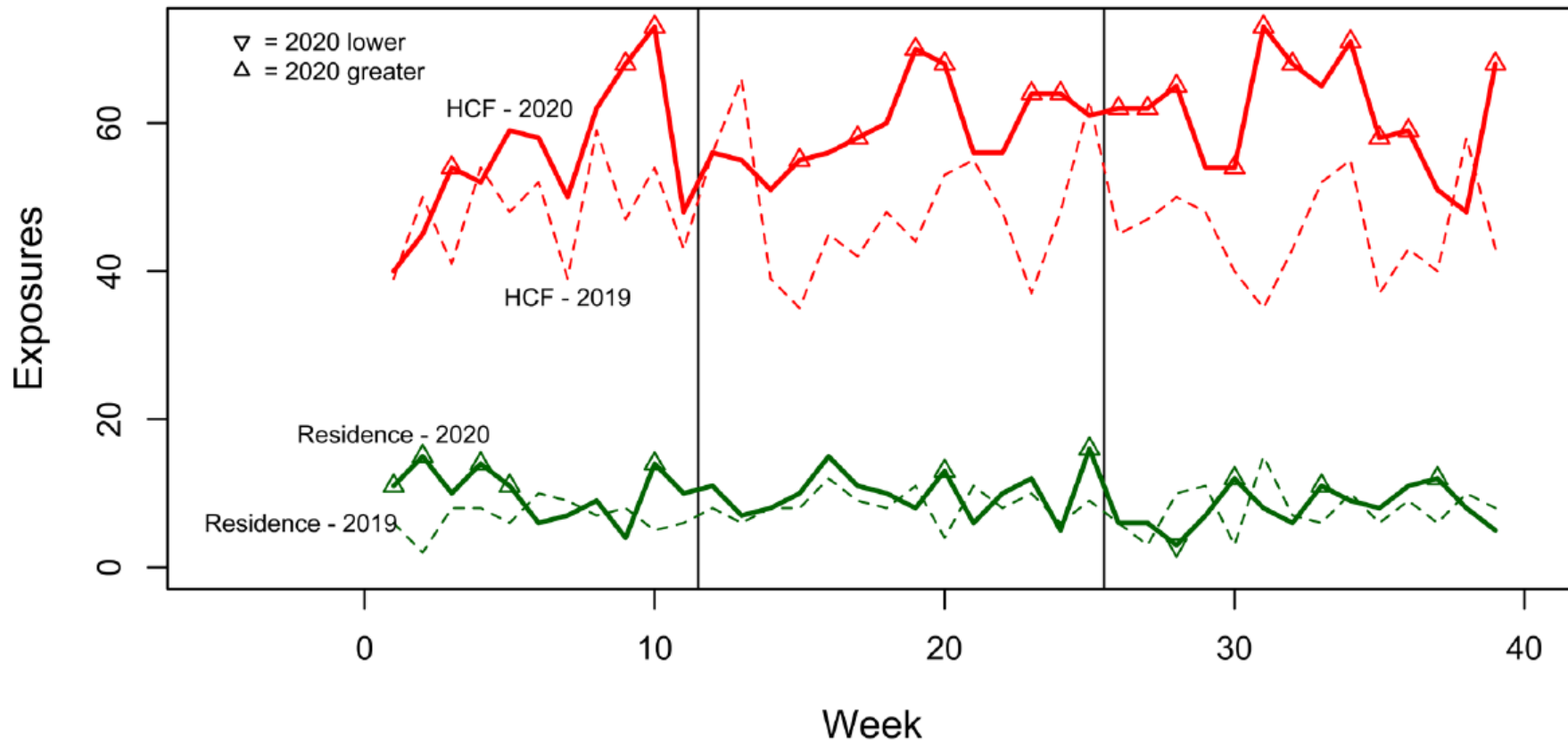
Poison Center Prescription Opioids, 2019-2020



Poison Center Prescription Opioids, 2019-2020



Poison Center Prescription Opioids, 2019-2020



Poison Center Data During COVID-19

- Changes in API reporting
- May be seeing increase in counterfeit pills
- Changes in locations of care and severity
- The constant question:
 - Which findings will persist and which are transient?



Impact of COVID-19 on Treatment Center Data

Treatment Center Site Surveys

- Survey to treatment center leadership to evaluate barriers to providing care, as well as innovations
- Questions on changes in practice, including MOUD and transitions to telemedicine
- Mixed methods, with predominantly qualitative data

Site Survey Response Rate

- Launch 1
 - TC: 64.0%
(103/161)
 - OTP: 85.7%
(54/63)
 - SKIP: 50.0%
(49/98)
- Launch 2
 - TC: 62.7%
(101/161)
 - OTP: 81.0%
(51/63)
 - SKIP: 51.0%
(50/98)
- Launch 3
 - TC: 60.0%
(99/165)
 - OTP: 82.1%
(55/67)
 - SKIP: 44.9%
(44/98)

Barriers to Providing Treatment

- Centers reported fewer barriers over time
 - Launch 1: 52.4%
 - Launch 2: 38.6%
 - Launch 3: 33.3%
- Launch 1 85.2% of those who indicated a barrier said it was due to COVID-19
- Staff shortages also reported by the majority of treatment centers

Changes in Treatment Center Operations

- Treatment Centers reported suspending new patients and temporary closures during the first launch and over time reported fewer suspensions and closures

Operation Change	March 1, 2020 through May 31, 2020	June 1, 2020 through September 31, 2020	October 1, 2020 through December 31, 2020
Suspended patients from entering treatment	15.3%	3.1%	11.9%
Temporarily Closed and Reopened	6.9%	3.1%	5.1%
No closure/suspensions	76.4%	93.8%	83.1%

Intake Changes

- Majority of centers continued to do onsite intakes throughout the pandemic
- Roughly half of centers utilized telemedicine during intakes throughout the pandemic

Methadone Changes

- Majority of Treatment Centers have reduced the amount of time a patient is on methadone before providing them with first take-home dose
- Majority of Treatment Centers have utilized telemedicine to follow up with patients who receive take-home doses of methadone

Buprenorphine Changes

- Majority of Treatment Centers did not start people on buprenorphine who would have otherwise received methadone
- Majority Treatment Centers have utilized telemedicine to follow up with patients who receive buprenorphine but did not use telemedicine to initiate buprenorphine treatment

Patient Changes

- Treatment Centers did not see a change in the number of patients stopping treatment during the pandemic
- Treatment Centers reported patient relapses either increasing or remaining the same during the pandemic
- Treatment Centers had an evenly split response regarding number of new patients seeking treatment. About a third each said increasing, decreasing, and remaining the same

Open Ended Text Response Examples

- “The spread of COVID-19 has definitely increased the opioid use and we are finding it hard to get the people treaded due to lack of testing sites.”
- “our doctors are using telemedicine more so than seeing our clients in person”
- “A decrease in the number of patients seeking MAT services”
- “Moved to very generous takehomes, with most patients having two week or monthly takehomes.”
- “Telehealth counseling; car dosing”
- “Staffing shortages have led to decreases in counseling services in recent months.”
- “Due to court and other legal offices not meeting regularly the demand for treatment has decreased.”
- “I do not believe it has affected people seeking services overall.”
- “Because the courts were closed or slow we at times had trouble getting clients for admission out of jail. This made following our wait list order a problem.”
- “Clients making up bogus COVID excuses as to why they aren't here for therapy”
- “therapy services is offered virtually”
- “Some clients who are positive for covid or experience similar symptoms have been dosed in their cars. Otherwise, no changes.”
- “Telemedicine for counseling Services”

Highlights of Research Questions and Novel Approaches

- Changes in current substance use patterns vs data collection
- Crucial importance of digital formats
- Transitions to/away from illicit substances and Rx substances
- Substance use treatment changes
- High risk populations (e.g. Healthcare workers)
- NMU trends for other drugs (e.g. NMURx COVID medications, OTC medication projects)

Thank You

Questions?

Janetta Iwanicki, MD
Chief Scientific Officer, RMPDS Research
Janetta.Iwanicki@rmpds.org